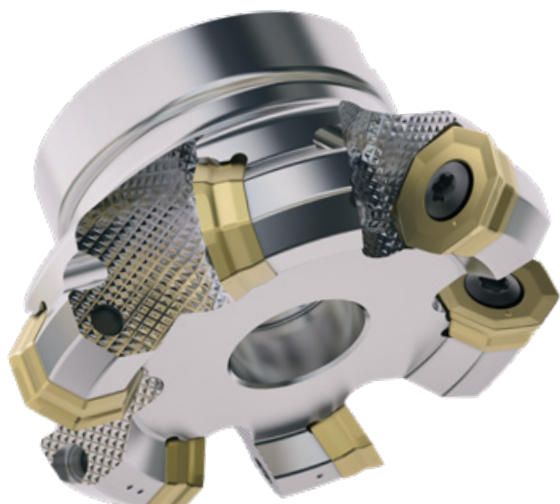


# Product Launch 2025.1



## Roughing to finishing in every material

The new **Octomill™06** with a unique multi-pocket design handles three application types: face milling, moderate high feed milling, and profiling. The inserts with eight cutting edges provide enhanced strength and robustness. The pocket seat design ensures secure handling and accurate positioning. The spiral chip shape is beneficial in long-chipping materials.



Discover more about Octomill™06, scan the QR-code or visit [www.secotools.com/milling/face-milling/octomill06](http://www.secotools.com/milling/face-milling/octomill06)

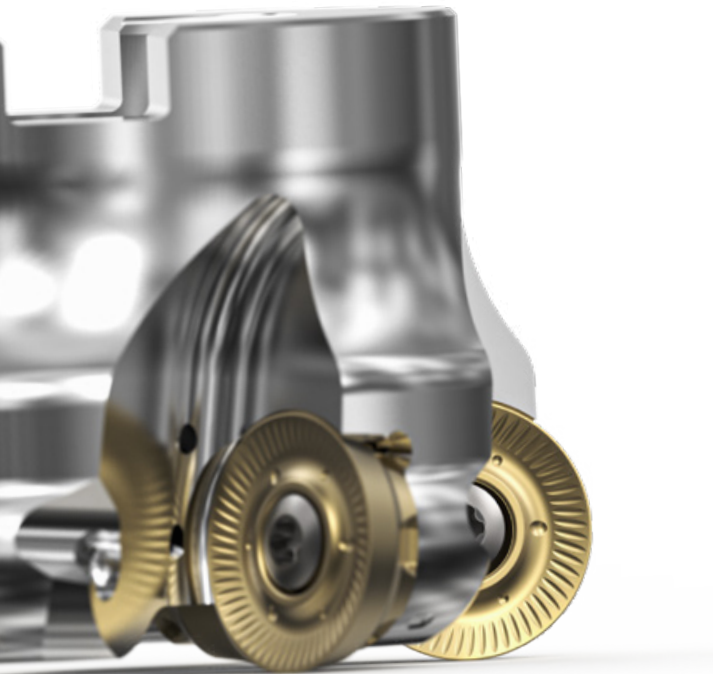
## Higher stability & metal removal rates

**Seco® Stabilizer™ 2.0** series' unique flute geometry reduces vibration and increases stability. The SIRON-A coating enhances wear resistance and tool life. Geometry plus coating result in reduced cycle times with high metal removal rates in 2D applications, including slot, pocket and side milling.



Discover more about Seco® Stabilizer™, scan the QR-code or visit [www.secotools.com/milling/end-mill/stabilizer](http://www.secotools.com/milling/end-mill/stabilizer)





## Next level performance and flexibility

The **Seco® Round 20** copy milling cutter is versatile for face, side, slot, plunge, and ramp milling in various materials. It offers flexible edge counts (4, 6, or 8) and reduces costs with replaceable cassettes and shims. Backward compatibility allows using existing inserts with the latest cutter body.



Discover more about Seco® Round 20, scan the QR-code or visit [www.secotools.com/milling/copy-milling/round20](http://www.secotools.com/milling/copy-milling/round20)

## Securely machine two sides of a part

The innovative **Seco® 335.98** disc milling cutter reduces tooling costs with eight cutting edges per insert and extends insert life by up to 60%. The milling system enhances productivity, stability, and flexibility by cutting two sides simultaneously. The unique insert geometry minimizes vibration.



Discover more about Discmill 335.98, scan the QR-code or visit [www.secotools.com/milling/disc-milling/335-98](http://www.secotools.com/milling/disc-milling/335-98)



## More versatile than ever before

The **335.14 disc milling** cutter range now includes over 300 products for various applications like grooving, chamfering, and threading. Replaceable heads reduce tooling costs and increase versatility. Use the Seco Assistant app or [www.secotools.com](http://www.secotools.com) to find optimal combinations and access tool usage tips.



Discover more about 335.14 disc milling cutters, scan the QR-code or visit [www.secotools.com/milling/disc-milling/335-14](http://www.secotools.com/milling/disc-milling/335-14)





## Precision where it is needed

The new tap series includes versions designed for specific material groups; **T35-P** for alloyed steel, **T35-K** for cast irons and **T35-H** for tough materials. The combination of an HSSE-PM substrate with TiAlSiN coating delivers smooth, hard and crack-resistant surfaces to ensure precise tapping. For aluminum, the **T35-N** taps ensure optimal chip formation and evacuation with their large, smooth flutes.



Discover more about T35 taps, scan the QR-code or visit [www.secotools.com/threading/thread-tapping/t35](http://www.secotools.com/threading/thread-tapping/t35)

## The versatile solution for HMLV

The **T30 taps** deliver a reliable performance for general purpose applications across multiple materials. Engineered for versatility, these taps are the go-to solution for shops requiring tapping on an occasional basis. With an extensive array of threads and sizes, the T30 taps ensure universal compatibility and readiness for any task.



Discover more about T30 taps, scan the QR-code or visit [www.secotools.com/threading/thread-tapping/t30](http://www.secotools.com/threading/thread-tapping/t30)

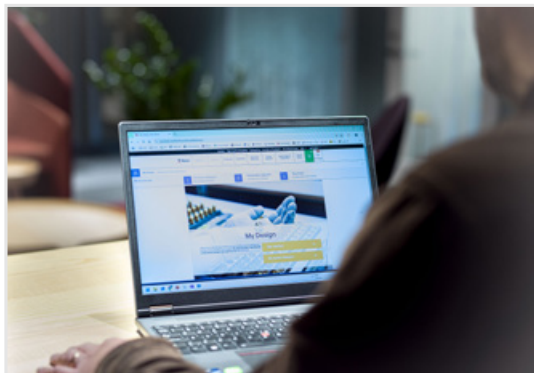


## When standard is not enough

**Seco® My Design** automatically generates a custom tool based on user input. Select and modify a standard tool, or simply enter key parameters and the system generates an ideal solution. Quantity-based pricing enables customers to understand their real costs. Downloadable 2D drawings and 3D CAD models allow for quick verification that a custom tool fits its intended application. My Design is available through Seco® My Pages 24/7/365.



Discover more about My Design, scan the QR-code or visit [www.secotools.com/service/mydesign](http://www.secotools.com/service/mydesign)

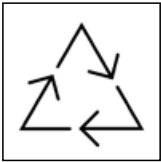
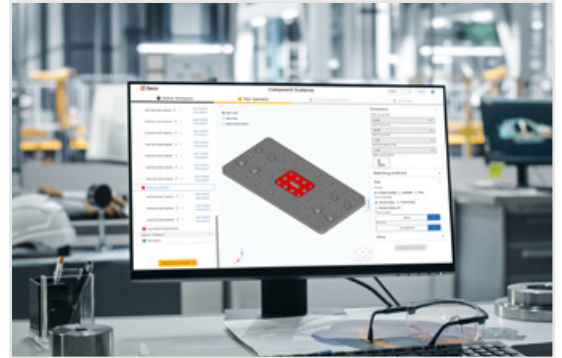


## Get individual recommendations

**Seco® Component Guidance** analyzes a 3D part model to create instant tool and cutting data recommendations for 2.5-axis milling. Its fast, reliable performance streamlines process optimization and helps ensure accurate job quotes. The software tailors recommendations based on customer purchasing history and eliminates unnecessary tool acquisitions.



Discover more about Component Guidance, scan the QR-code or visit [www.secotools.com/service/componentguidance](http://www.secotools.com/service/componentguidance)



## Recycling, our commitment to long-term sustainability

Seco® is committed to supporting more sustainable processes that also deliver value to you as a customer. We recycle all carbide products, including bars and anvils, but do not accept steel, ceramic, or cermet materials.



Discover more about how to become a recycling partner and our recycling program, scan the QR-code or visit [www.secotools.com/recycling](http://www.secotools.com/recycling)